

# Student Satisfaction Survey (Teaching-Learning process)

## Anantrao Thopte College, Bhor

Tick the Stream you are pursuing in the college: **B.A./B.Com/B.Sc./B.Sc.(CS)/B.B.A.C.A./M.A./M.Com./M.Sc./M.Sc.(CS)**(Academic Year:.....)

Class you are pursuing in the college:.....

-----

1. How much of the course syllabus is covered in the class?

a)Very good	b)Good	c)Average	d)Not good
-------------	--------	-----------	------------

2. Do the teachers explain a topic by examples and applications?

a)Always	b)Usually	c) Occasionally/Sometimes	d)Never
----------	-----------	---------------------------	---------

3. How well can you communicate and discuss your problems with teachers?

- a. Always
- b. Sometimes
- c. Very few occasions
- d. Never

4. How can you define/describe the evaluation of internal assessment examinations?

- a. Always fair
- b. Usually fair
- c. Sometimes unfair
- d. Usually unfair

5. Do the teachers inform you about the course outcomes ('course outcomes' means things you will learn or you will be able to do on your own at the end of the course)?

- a. Always
- b. Usually
- c. Occasionally/Sometimes
- d. Never

6. Do the teachers find out your weaknesses and help you to overcome the weaknesses?

- a. Always
- b. Usually
- c. Occasionally/Sometimes
- d. Never

7. Do the teachers encourage you to participate in extra-curricular activities?

- a. Always
- b. Usually
- c. Occasionally/Sometimes
- d. Never

8. Are the teachers ready to help you even after regular class hours?

- a. Always
- b. Usually
- c. Occasionally/Sometimes
- a. Not at all

Student Satisfaction Survey (Teaching-Learning process)  
Anantrao Thopte College, Bhor

9. Do the teachers use Computer-aided teaching methods such as LCD Projector, Multimedia to teach?
  - a. Always
  - b. Usually
  - c. Occasionally/Sometimes
  - d. Never
  
10. Are the library resources and information sufficient to meet your needs?
  - a. Always
  - b. Usually
  - c. Occasionally/Sometimes
  - d. Not at all
  
11. Was your performance in assignments discussed with you?
  - a. Every time
  - b. Usually
  - c. Occasionally/Sometimes
  - d. Never
  
12. Your teacher does a necessary follow-up with an assigned task to you.
  - a. Every time
  - b. Usually
  - c. Occasionally/Sometimes
  - d. Never
  
13. What percentage of teachers in your department use ICT tools such as power-point presentations, animations and software, etc. while teaching?
  - a. All most all
  - b. Very few
  - c. One or two
  - d. None
  
14. How do you explain the teaching process of your department?
  - a. Very Good
  - b. Good
  - c. Average
  - d. Not good
  
15. The institution provides you many opportunities to learn and grow in your life
  - a. Strongly agree
  - b. Agree
  - c. Neutral
  - d. Disagree
  
16. What do you think about the regularity of classes in your department?
  - a. Very Good
  - b. Good
  - c. Average
  - d. Not good

## Student Satisfaction Survey (Teaching-Learning process) Anantrao Thopte College, Bhor

17. What do you think about the punctuality of the faculty members in terms of taking classes in your department?

- a. Very Good
- b. Good
- c. Average
- d. Not good

18. What do you think about the behaviour of the faculty members of your department?

- a. Very Good
- b. Good
- c. Average
- d. Not good

19. The institute/ teachers use student centric methods, such as experiential learning, participative learning and problem solving methodologies for enhancing learning experiences.

- a. Strongly agree
- b. Moderately agree
- c. Seldom
- d. Not at all

## Anantrao Thopte College, Bhor

### Student Satisfaction Survey Report (Teaching-Learning process) : 2018-2019

**Total Number of Respondents: 295**

Sr.No.	SSS Questions	Students Response in %				
		A	B	C	D	Total
1	How much of the course syllabus is covered in the class?	37.97	51.53	9.49	1.02	295
2	Do the teachers explain a topic by examples and applications?	69.15	22.71	7.80	0.34	295
3	How well can you communicate and discuss your problems with teachers?	37.97	47.46	9.83	4.75	295
4	How can you define/describe the evaluation of internal assessment examinations?	52.54	33.56	9.15	4.75	295
5	Do the teachers inform you about the course outcomes ('course outcomes' means things you will learn or you will be able to do on your own at the end of the course)?	50.51	36.27	10.17	3.05	295
6	Do the teachers find out your weaknesses and help you to overcome the weaknesses?	44.41	40.00	8.47	7.12	295
7	Do the teachers encourage you to participate in extra-curricular activities	54.58	31.19	31.19	5.08	295
8	Are the teachers ready to help you even after regular class hours?	66.78	22.37	8.47	2.37	295
9	Do the teachers use Computer-aided teaching methods such as LCD Projector, Multimedia to teach?	30.85	22.37	24.75	22.03	295
10	Are the library resources and information sufficient to meet your needs?	45.76	27.80	16.61	9.83	295
11	Was your performance in assignments discussed with you?	53.22	32.54	11.53	2.71	295
12	Your teacher does a necessary follow-up with an assigned task to you.	53.22	34.92	14.58	3.73	295
13	What percentage of teachers in your department use ICT tools such as power-point presentations, animations and software, etc. while teaching?	27.46	38.98	11.86	23.73	295
14	How do you explain the teaching process of your department?	36.27	52.20	7.12	4.41	295
15	The institution provides you many opportunities to learn and grow in your life	21.69	56.27	16.27	5.76	295
16	What do you think about the regularity of classes in your department?	43.05	37.97	12.20	3.39	295
17	What do you think about the punctuality of the faculty members in terms of taking classes in your department?	32.88	51.53	13.56	2.03	295
18	What do you think about the behaviour of the faculty members of your department?	43.05	48.47	6.78	2.03	295
19	The institute/ teachers use student centric methods, such as experiential learning, participative learning and problem solving methodologies for enhancing learning experiences	33.22	52.88	4.07	9.83	295

A=Very good/Always/Every Time/Allmost All/Strongly Agree

B=Good/Usually/Some times/very few/Agree

C=Average/Occasionally/Neutral/seldom

D=Not good/Never/Unfair/not at all/None

# Anantrao Thopte College, Bhor

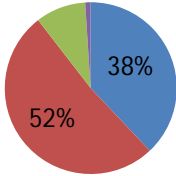
## Student Satisfaction Survey Report (Teaching-Learning process) : 2018-2019

Total Number of Respondents: 295

### Q1

■ a ■ b ■ c ■ d

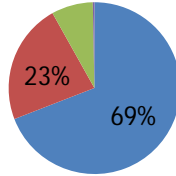
9% 1%



### Q2

■ a ■ b ■ c ■ d

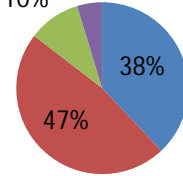
8% 0%



### Q3

■ a ■ b ■ c ■ d

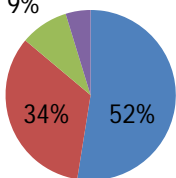
10% 5%



### Q4

■ a ■ b ■ c ■ d

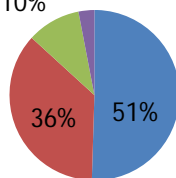
9% 5%



### Q5

■ a ■ b ■ c ■ d

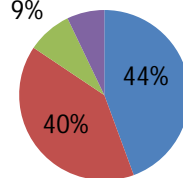
10% 3%



### Q6

■ a ■ b ■ c ■ d

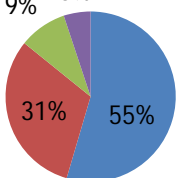
9% 7%



### Q7

■ a ■ b ■ c ■ d

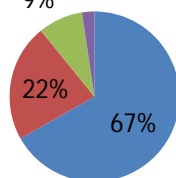
9% 5%



### Q8

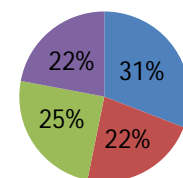
■ a ■ b ■ c ■ d

9% 2%



### Q9

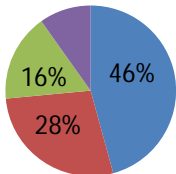
■ a ■ b ■ c ■ d



### Q10

■ a ■ b ■ c ■ d

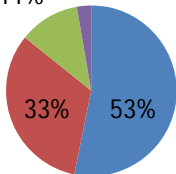
10%



### Q11

■ a ■ b ■ c ■ d

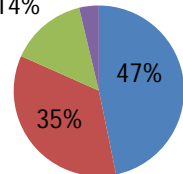
11% 3%



### Q12

■ a ■ b ■ c ■ d

14% 4%

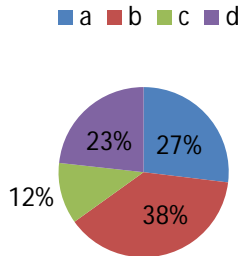


# Anantrao Thopte College, Bhor

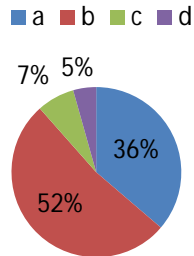
## Student Satisfaction Survey Report (Teaching-Learning process) : 2018-2019

Total Number of Respondents: 295

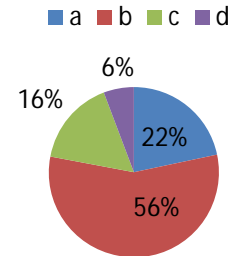
### Q13



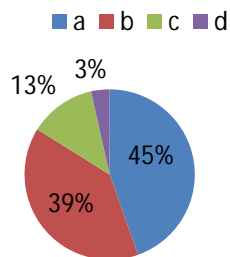
### Q14



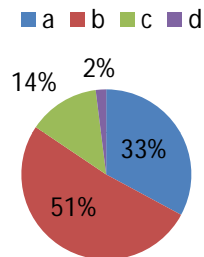
### Q15



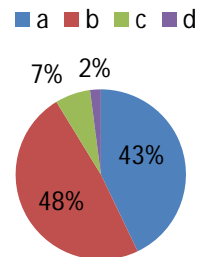
### Q16



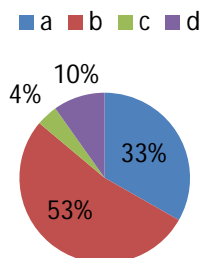
### Q17



### Q18



### Q19



# Anantrao Thopte College, Bhor

## Student Satisfaction Survey Report (Teaching-Learning process) : 2018-2019

Total Number of Respondents: 295

